

Description

The tape-head unit utilises the latest surface mount technology to further improve reliability and functionality. The supply has two options of 110V/240V operation with a fully encapsulated transformer and mains fuse for safety. The supply for the electronics is fully regulated and protected.

The head is injection moulded from self lubricating nylon and has Hall-effect sensors mounted in the head with two rows of four sensors, four north sensing and four south sensing. The float of the head is 15mm to allow ease of installation.

The tape mounting brackets are manufactured from powder coated 5mm thick mild steel with a centralised tensioning point to aid equal tensioning of the steel tape.

The system has 8 N/O and N/C contacts as standard and has an additional relay output which signals floor level when combined with channel 1 and 2, this output can be used to signal hand-winding at floor level.

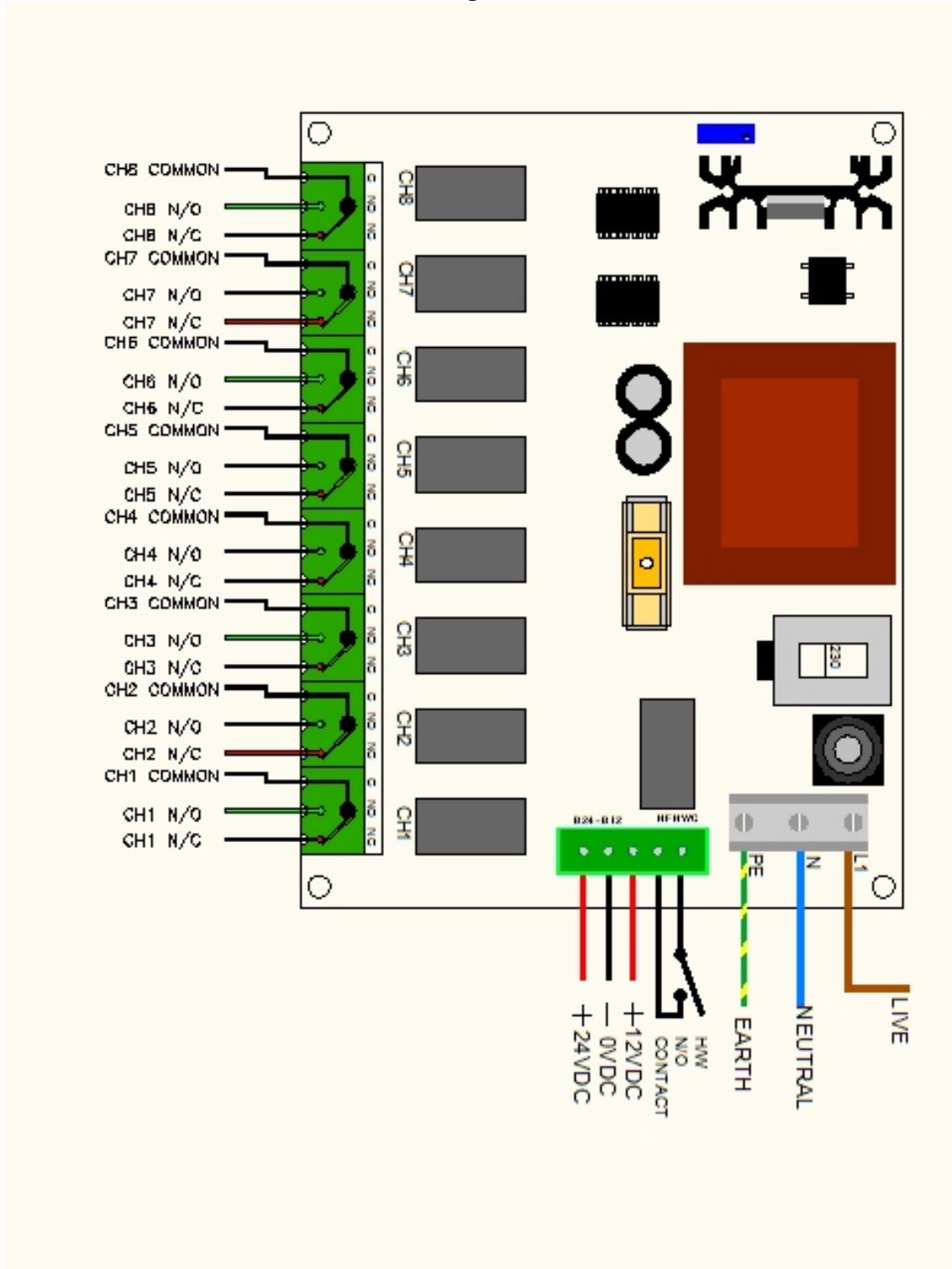
The Lid is clear plastic to allow observation of the relay operation and hence aid installation and fault diagnosis.

Features

- 240V – 110V SWITCHABLE OPERATION
- 4/8 WAY WITH WIDE SPACING TO PREVENT CROSS TALK OF MAGNETS
- NORTH AND SOUTH MAGNET OPERATION
- N/O and N/C relays with 5A rating
- 12v battery backup with 24V option
- Plug and sockets for ease of wiring
- Self Lubricating Nylon Guides with 15mm Float for ease of installation
- Onboard regulated supply
- Fully encapsulated transformer and mains fuse
- Powder coated 5mm thick support brackets with centralised tensioning to aid adjustment
- Clear plastic lid to allow easy observation of the relay operation

Designed, manufactured and supported in the UK

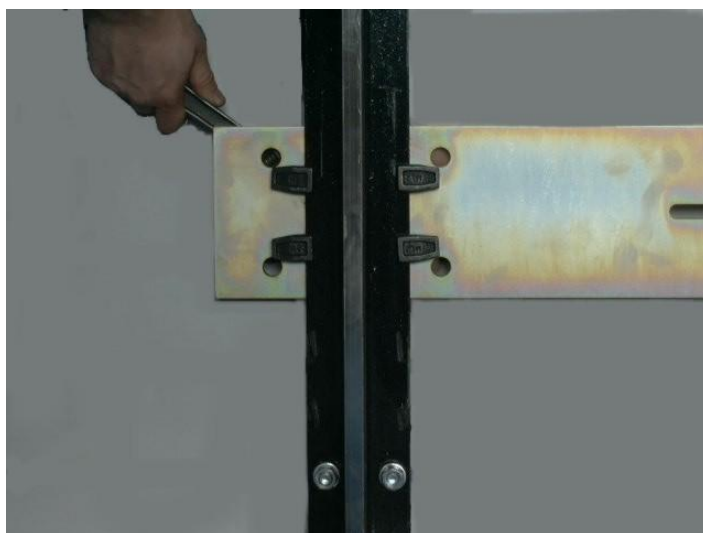
Wiring Connections



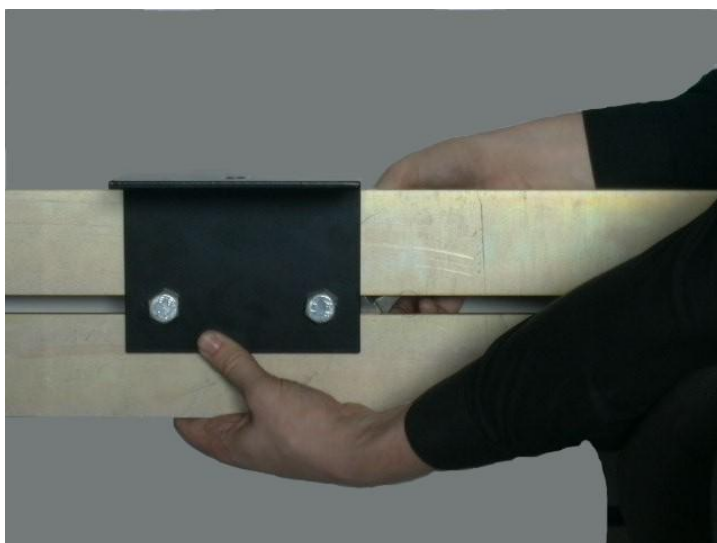
Tape Head Data Sheet

Fitting Instructions

Step 1: Fit the guide bracket at the bottom and top of the shaft, Ensure these are square and firmly secured.

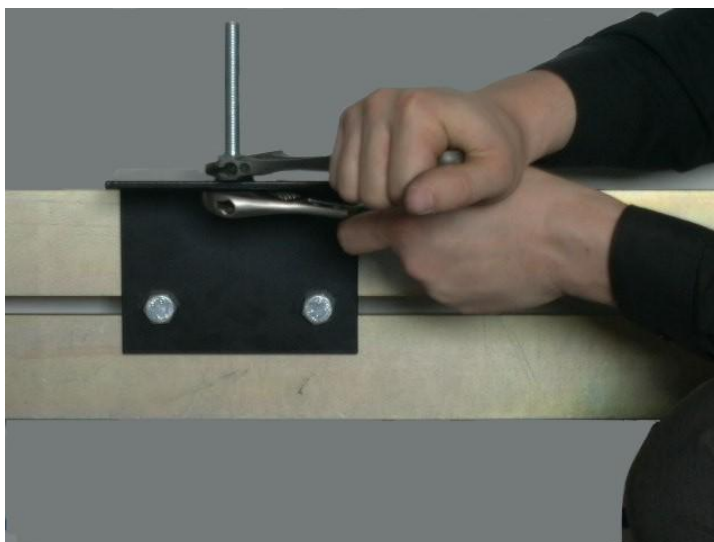


Step 2: Fit the bottom and top tape fixing brackets, the bracket at the top is dog-legged and the bottom fixing bracket is in two half's. Ensure the bracket's at the top and bottom of the shaft line up and will allow the tape to be fixed plumb.

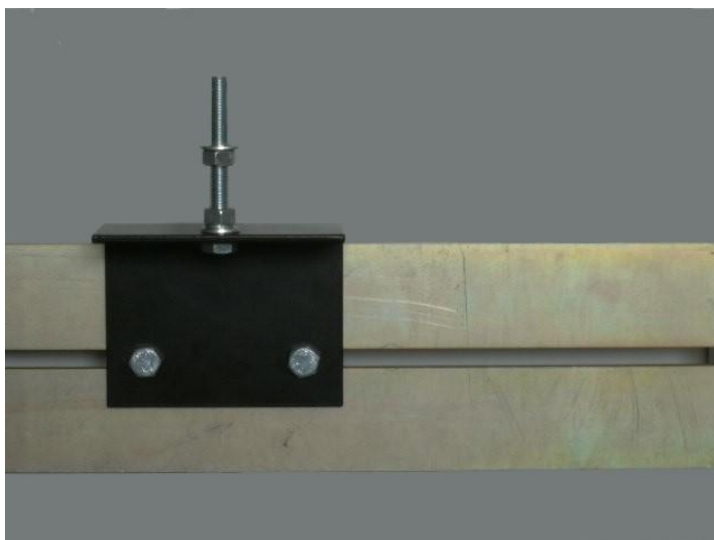


Tape Head Data Sheet

Step 3: Fit the M12x 80mm bolt through the tape tensioning bracket, and fix to the base of the bracket.

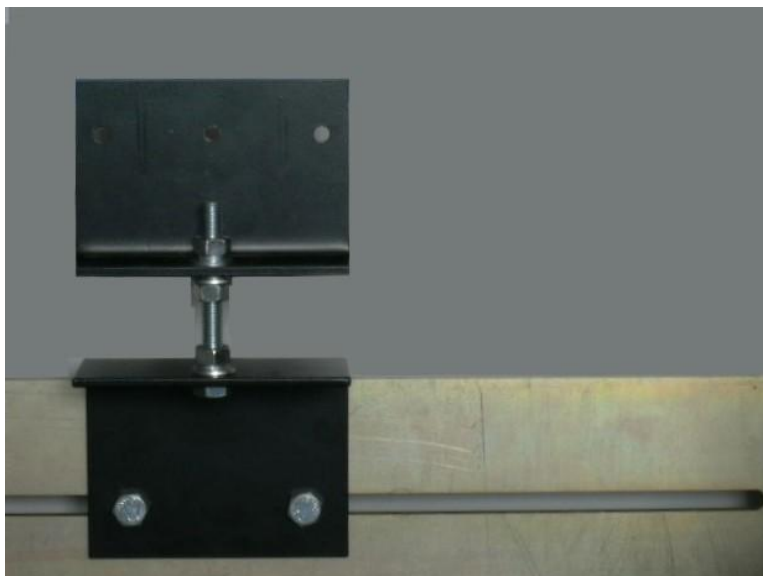


Step 4: Place a nut, spring and washer near the top of the bolt



Tape Head Data Sheet

Step 5: Fix the tape fixing bracket to the tensioning bracket and secure



Step 6: Clamp the tape in to the top bracket and secure the tape by drilling an 8mm clearance hole through the guide and using the 8mm bolt provided. Carefully roll out the tape, cut and fix to the bottom tensioning bracket.

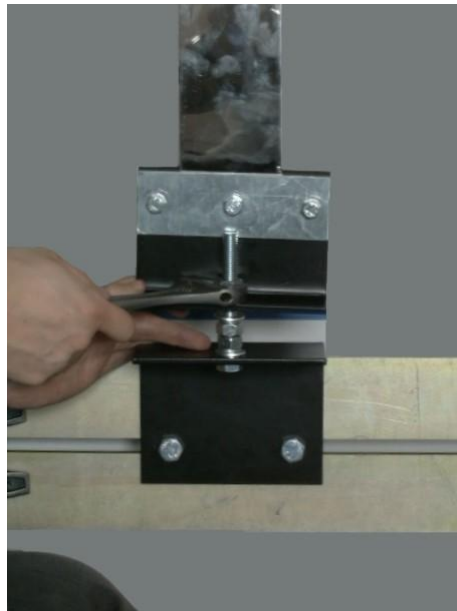


Tape Head Data Sheet

Step 7: Carefully roll out the tape, cut and clamp the tape at the bottom. Secure the tape by drilling an 8mm clearance hole through the guide and using the 8mm bolt provided.



Step 8: Tension the tape and once tensioned with-out any kinks in the tape, lock the clamping bracket in to position with the nut underneath the bracket.



Tape Head Data Sheet

Step 9: Fit the tape-head to the car, remove a shoe and fit the tape between the shoes ensuring the tape is securely fitted in the slots of the shoes and refit the tape-head shoe.

Step 10: Connect as per the connection diagram or as per your requirements.

Technical Data

Normalised Supply Voltage	110-240V AC +/- 10 %
Normalised Supply Current	100mA
Minimum Temperature	0°C
Maximum Temperature	50°C
Maximum Switching Voltage	277VAC/30VDC
Maximum Switching Current (AC1)	10A AC(NO)/3A AC(NC)
Contact Resistance	100mΩ Max